



Made in
Ukraine



TENKO

Comfort without additional
effort!



+ ELECTRIC
BOILERS

+ CONVECTORS

+ READY
SOLUTIONS

tenko.ua

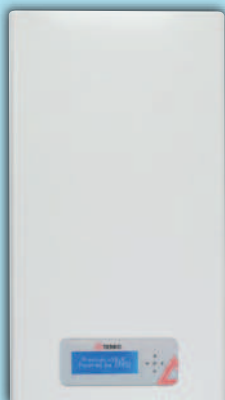
ASSORTMENT 2024



SMART 6-36 kW

Innovative electric boiler with intuitive control and sensor, 5" color display. Extended range of functions: heating, underfloor heating, quick transition from comfort temperature mode to economy mode, perfect protection system, first-class equipment. Remote control via the built-in Wi-Fi module.

Pages 4-5



Premium + 6-36 kW

ELECTRIC BOILERS of the series are equipped with a set of functions. The digital control can be connected to the integrated Wi-Fi module. Expansion tank, reliable security system.

Pages 6-7



Digital Standart + 6-36 kW

A series of ELECTRIC BOILERS with digital controls, built in an expansion tank and fully hydraulic safety group.

Pages 8-9



Digital Standart 3-15 kW

A series of ELECTRIC BOILERS with digital control, fully hydraulic safety group and additional electrical protection.

Pages 10-11



Digital 3-15 kW

A series of ELECTRIC BOILERS with digital controls and additional electrical protection.

Pages 12-13



Mini Digital & Mini 3-4,5 kW

A series of compact boilers with digital (Mini Digital) or analogue (Mini) management.

Pages 14-15

Pages 22-23

ASSORTMENT 2024



Standart + 6-36 kW

A series of ELECTRIC BOILERS with extended range and capacity, fully complete set with expansion tank, circulation pump and hydraulic group.

Pages 16-17



Standart 3-15 kW

A series of ELECTRIC BOILERS with extended range and capacity, fully complete set with expansion tank, circulation pump and hydraulic group.

Pages 18-19



Econom 3-30 kW

Simple electric boiler with the option to connect additional devices.

Pages 20-21



Floor standing 30, 60, 90 130 kW

A series of powerful electrical appliances for large residential and industrial buildings. With 2 to a maximum of 9 heating levels. The equipment has reliable electrical protection.

Pages 24-25



Prom 30-60 kW

High-tech and reliable solution for heating the room.

Pages 26-27



Heat guns 2-24 kW

Effectively used for heating warehouses, offices, shops, street stalls, trailers on construction sites or for drying construction premises

Pages 28-29

Electric convectors 500-2500 W



Modern heating devices with simple management.

Pages 30-31

Fertige Lösungen



Electric tube heater for boilers, radiators towel dryers.



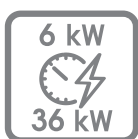
Electric tube heating blocks BE, BHP

Pages 32-33

Pages 34

SMART

SMART series - intelligent, reliable, efficient premium class boilers



Advantages:

- ▶ The 5" touch color display allows you to easily adjust the parameters and monitor the operation of the boiler.
- ▶ Maximum comfort thanks to a variety of functions: control of the heating circuit, floor heating circuit and indirect heating boiler; Timer for setting the work schedule, quick mode change "Comfort" / "Eco", ability to connect a wireless sensor.
- ▶ Quiet operation of the boiler thanks to the triac relay of our own production.
- ▶ High energy efficiency through modulation of the boiler output and targeted operation of heating elements.
- ▶ Reliable protection system: built-in RCD protection device, protection against overheating, "antifreeze" function.
- ▶ Premium equipment: 7 l expansion tank of European production, circulation pump with frequency controller, copper cabling, high-quality heat exchanger from our own production.
- ▶ Accounting statistics on electricity consumption.



The integrated Wi-Fi module allows you to connect the boiler to a home access point and manage its work through a special application or WEB interface.
+Constant software updates
+Synchronization with a real-time server



TECHNICAL CHARACTERISTICS:

Nominal power, kW	6	9	12	15	18	21	24	30	36
Supply voltage, V	230/400	230/400	230/400	400	400	400	400	400	400
Electricity frequency in the network, Hz	50/60								
Heating element - block, Number of electric tubular heaters	6 (2 Blocks of 3 electric tube heaters each)								
The maximum pressure in the system, Bar	3	3	3	3	3	3	3	3	3
Heating control range, °C	Digital: Water from 10 °C to 75 °C, Room temperature from 7 °C to 40 °C								
Connecting pipes, inches	Ø 3/4"								
Heat storage capacity, dm ³	7,5								
Overall dimensions, mm, H x W x D	740 x 410 x 256,5								
Net weight, no more, kg	32				34				
Order number	96540	96694	96696	96596	96697	96698	96699	96700	96701



Construction and complete set

1. Automatic ventilation
2. Digital pressure sensor
3. Emergency thermal relay
4. Expansion vessel of European production
5. Power relay trademark TENKO
6. Modular contactor
7. Terminal block for connecting power cables
8. Safety valve
9. Current sensor
10. Heat exchanger
11. Block of heating elements TENKO
12. Circulation pump with frequency controller
13. Air temperature sensor
14. Heat carrier inlet (return)
15. Heat carrier outlet (supply)
16. Heat carrier temperature sensor (return)
17. Heat carrier temperature sensor (supply)

Control and Management

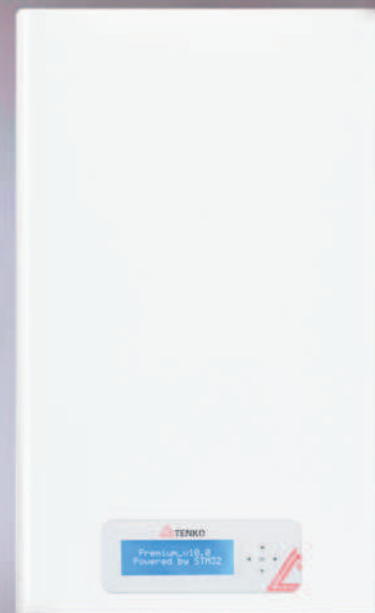
1. Switch «ON-OFF»
2. Touching the 5" color display allows you to configure parameters and monitor the operation of the boiler
3. Control board of TENKO rademark



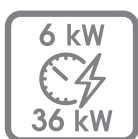
Efficiency
99%



PREMIUM+



The Premium+ series is a perfect engineering system and creates coziness



Advantages:

- ▶ With the integrated daily/weekly programmer you can set the desired operating mode taking into account your rhythm of life.
- ▶ Power modulation and a built-in electronic meter significantly reduce power consumption.
- ▶ The built-in microcontroller and software control system ensure complete control and reliable operation of the boiler.
- ▶ The integrated Wi-Fi module allows you to control the boiler and monitor its condition from anywhere in the world.
- ▶ A digital display that shows the current settings and service information provides additional COMFORT.
- ▶ Premium features:
 - Circulation pump with frequency controller
 - Integrated Wi-Fi module



Wi-Fi module to remotely control boiler operation via a browser or application on Android or iOS (optional)



TECHNICAL CHARACTERISTICS:

Nominal power, kW	6	9	12	15	18	21	24	30	36
Supply voltage, V	230/400	230/400	230/400	400	400	400	400	400	400
Electricity frequency in the network, Hz	50								
Heating element - block, Number of electric tubular heaters	6 (2 Blocks of 3 electric tube heaters each)								
The maximum pressure in the system, Bar		3							
Heating control range, °C	Digital: Water from 10 °C to 75 °C, Airgap to 7 °C to 40 °C								
Connecting pipes, inches	Ø 3/4"								
Heat storage capacity, dm ³	6,5								
Overall dimensions, mm, H x W x D	740x415x285								
Net weight, no more, kg	32	32	32	32	33	33	33	33	33
Order number	51154	51242	51243	51244	51245	51246	51247	51248	51163

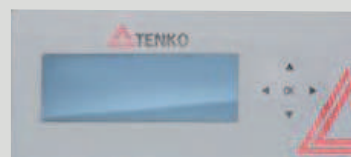


Construction and complete set

1. Automatic ventilation
2. Emergency thermal relay
3. Heat exchanger
4. Expansion tank of European production
5. Solid state relay with water cooling of in-house production
6. Block of heating elements
7. Power connection terminal
8. Digital pressure sensor
9. Circulation pump
10. Temperature sensors
11. Connecting pipes

Control and Management

1. Display for convenient setting and reading of current and service information
2. Navigation and control buttons
3. Buttons for turning on the network, maintenance mode and minimum temperature



DIGITAL STANDART +



Digital Standart+ series - are perfect engineering solutions for maximum COMFORT

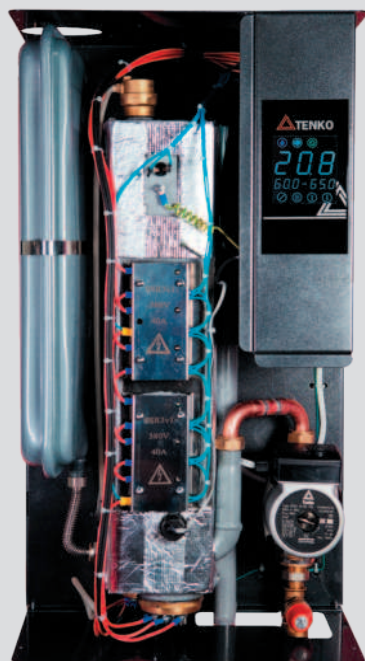


Advantages:

- ▶ New touch screen.
- ▶ Digital control and two built-in sensors – heat transfer temperature and room temperature allow you to save electricity.
- ▶ Increased efficiency: Control of the activation time of the circulation pump - before and after activation of heating elements.
- ▶ Stepless control of the temperature in the heating circuit and the ability to select the boiler operating mode depending on the temperature of the heat transfer medium or the airgap temperature in the room ensure additional COMFORT.
- ▶ Silent operation thanks to solid state relays.
- ▶ Complete hydraulic safety group:
built-in expansion tank of European production
Automatic air vent
Digital pressure sensor
Safety valve
- ▶ Additional electrical PROTECTION – duplication of the modular contactor.
- ▶ Ergonomics and aesthetics:
High-quality powder coating of the housing
two color options - white and titanium noble

TECHNICAL CHARACTERISTICS:

Nominal power, kW	6	6	9	12	15	18	21	24	30	36
Supply voltage, V	220	380	380	380	380	380	380	380	380	380
Electricity frequency in the network, Hz	50	50	50	50	50	50	50	50	50	50
Heating element - block, Number of electric tubular heaters	3	3	3	6	6	6	6	6	6	6
The maximum pressure in the system, Bar	3	3	3	3	3	3	3	3	3	3
Heating control range, °C	Digital: Water from 20 °C to 75 °C, Airgap from 10 °C to 40 °C									
Connecting pipes, inches	Ø 3/4"									
Heat storage capacity, dm ³	1,7	1,7	1,7	6,6	6,6	6,6	6,6	6,6	6,6	6,6
Overall dimensions, mm, H x W x D	675x383x235									
Net weight, no more, kg	30	30	30	35	35	35	35	35	35	35
Order number	65764	65765	65758	65705	65766	65750	65767	65776	65768	65769



Construction and complete set

1. Automatic air vent
2. Emergency thermal relay
3. Digital pressure sensor
4. Expansion tank of European production
5. Heat exchanger made of high quality steel 3 mm
6. Block of heating elements
7. Circulation pump
8. Safety valve 3 bar
9. Inlet pipe 3/4"
10. Outlet pipe 3/4"

Control and Management

1. Light indicators
2. Touch screen



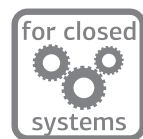
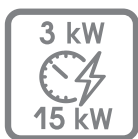
Efficiency
99%



DIGITAL STANDARD



*Digital Standard Series - new technologies
that work for you*

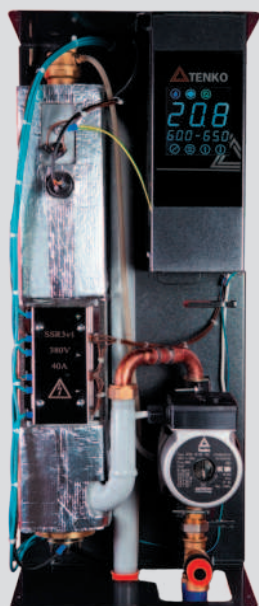


Advantages:

- ▶ New touch screen
- ▶ Digital control and two built-in sensors – heat transfer temperature and room temperature allow you to save electricity.
- ▶ Increased efficiency: Control of the switch-on time of the circulation pump – before and after the heating elements are switched on.
- ▶ Stepless control of the temperature in the heating circuit and the ability to choose the boiler operating mode depending on the temperature of the coolant or the temperature of the room airgap provide additional COMFORT.
- ▶ Silent operation thanks to solid state relays.
- ▶ Reliable hydraulic safety group:
 - Automatic air vent
 - Digital pressure sensor
 - Safety valve
- ▶ Additional electrical PROTECTION – duplication of the modular contactor.
- ▶ Ergonomics and aesthetics:
 - compact size
 - High-quality powder coating of the housing
 - two color options - white and titanium noble

TECHNICAL CHARACTERISTICS:

Nominal power, kW	3	4,5	6	7,5	9	10,5	12	15
Supply voltage, V	220	220/380			380			
Electricity frequency in the network, Hz	50	50	50	50	50	50	50	50
Heating element - block, Number of electric tubular heaters	3	3	3	3	3	3	3	3
The maximum pressure in the system, Bar	3	3	3	3	3	3	3	3
Heating control range, °C	Digital: Water from 20 °C to 75 °C, Airgap from 10 °C to 40 °C							
Connecting pipes, inches	Ø 3/4"							
Heat storage capacity, dm ³	1,7							
Overall dimensions, mm, HxW x D	650x260x190							
Net weight, no more, kg	15	15	15	15	15	15	15	15
Order number	52043	52078 52079	52046 52080	52030 52081	51970	51028	51029	51082



Construction and complete set

1. Automatic air vent
2. Emergency thermal relay
3. Digital pressure sensor
4. Heat exchanger made of high-quality steel 3 mm
5. Block of heating elements
6. Circulation pump
7. Safety valve 3 bar
8. Inlet pipe 3/4"
9. Outlet pipe 3/4"

Control and Management

1. Light indicators
2. Touch screen



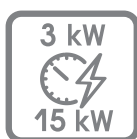
Efficiency
99%



DIGITAL



*Digital Series - new technologies
that work for you*



Advantages:

- ▶ Digital control and two built-in sensors – heat transfer temperature and room temperature allow you to save electricity.
- ▶ Increased efficiency: Control of the switch-on time of the circulation pump – before and after the heating elements are switched on.
- ▶ Stepless control of the temperature in the heating circuit and the ability to select the boiler operating mode depending on the temperature of the heat transfer medium or the temperature of the room airgap ensure additional COMFORT.
- ▶ Additional electrical PROTECTION – duplication of the modular contactor
- ▶ Ergonomics and aesthetics:
 - compact size
 - High-quality powder coating of the housing
 - two color options - white and titanium noble

TECHNICAL CHARACTERISTICS:

Nominal power, kW	3	4,5	6	7,5	9	10,5	12	15
Supply voltage, V	220	220/380			380			
Electricity frequency in the network, Hz	50	50	50	50	50	50	50	50
Heating element - block, Number of electric tubular heaters	3	3	3	3	3	3	3	3
The maximum pressure in the system, Bar	3	3	3	3	3	3	3	3

Heating control range, °C Digital: Water from 20 °C to 75 °C, Airgap from 10 °C to 40 °C

Connecting pipes, inches	Ø 3/4"							
--------------------------	--------	--	--	--	--	--	--	--

Heat storage capacity, dm³ 1,7

Overall dimensions, mm, HxW x D	580x190x97							
---------------------------------	------------	--	--	--	--	--	--	--

Net weight, no more, kg 9

Order number	52072	51855	51976	52075	52077	52026	52027	52025
		59433	52074	52076				



Construction and complete set

1. Emergency thermal relay
2. Heat exchanger made of high quality steel 3 mm
3. Block of heating elements
4. Inlet pipe 3/4"
5. Outlet pipe 3/4"

Control and Management

1. Heat level buttons
2. Light indicators
3. Control display
4. Control buttons



MINI DIGITAL



*Mini Digital - compact boiler
with great options*

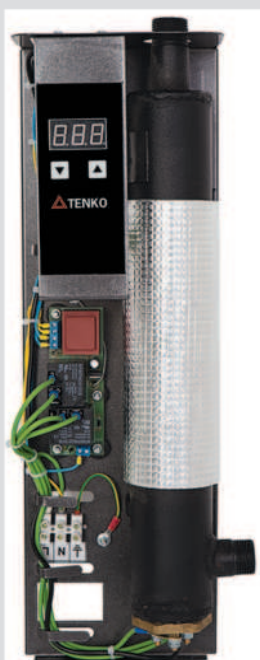


Advantages:

- ▶ Digital control for rational use of electricity.
- ▶ The infinitely variable regulation of the temperature of the heat transfer medium ensures COMFORT when using it.
- ▶ Reliable simple design.
- ▶ Two-stage overheating protection – software and mechanical.
- ▶ High-quality heating elements made in-house.
- ▶ Ergonomics and aesthetics:
 - compact size
 - High-quality powder coating of the housing
 - two color options - white and titanium noble1

TECHNICAL CHARACTERISTICS:

Nominal power, kW	3	4,5
Supply voltage, V	220	220
Electricity frequency in the network, Hz	50	50
Heating element - block, Number of electric tubular heaters	2	2
The maximum pressure in the system, Bar	3	3
Heating control range, °C	Digital: from 0 °C to 80 °C	
Connecting pipes, inches	Ø 3/4"	
Heat storage capacity, dm ³	0,8	
Overall dimensions, mm, HxW x D	465x151x91	
Net weight, no more, kg	5	5
Order number	65568	65569



Construction and complete set

1. Inlet pipe 3/4"
2. Heat exchanger made of high-quality steel
3. Main electrical control board
4. Power connection terminal
5. Outlet pipe 3/4"

Control and Management

1. Heat level buttons: convenient setting and current display. Information from two sensors temperatures.
2. Control buttons



Efficiency
99%



STANDART +

*The Standart+ series is elegance
and reliability*



Advantages:

- ▶ Economical power consumption thanks to stepless regulation Heating circuit from 0 to +90 °C.
- ▶ Blocks of heating elements made in-house.
- ▶ Expansion vessel of European production.
- ▶ Hydraulic safety group of European production.
- ▶ Analogue pressure relay.
- ▶ There is an option to connect a programmer.
- ▶ High quality powder coating.

TECHNICAL CHARACTERISTICS:

Nominal power, kW	6	9	12	15	18	21	24	30	36
Supply voltage, V	230/400	230/400	400	400	400	400	400	400	400
Electricity frequency in the network, Hz	50								
Heating element - block, Number of electric tubular heaters	6								
The maximum pressure in the system, Bar	3								
Heating control range, °C	Analog: from 0 °C to 90 °C								
Connecting pipes, inches	Ø 3/4"								
Heat storage capacity, dm ³	6,5								
Overall dimensions, mm, HxW x D	740x415x285								
Net weight, no more, kg	31	31	31	31	32	32	32	32	32
Order number	97093	97097	97096	97098	97099	97100	97101	97102	97103



Construction and complete set

1. Automatic ventilation
2. Emergency thermal relay
3. Analogue pressure switch
4. Circulation pump
5. Heat exchanger
6. Expansion tank
7. Safety valve
8. Block of heating elements
9. Connecting pipes
10. Power connection terminal

Control and Management

1. Thermomanometer
2. Thermostat
3. Buttons on/off and heating levels
4. Light indicators



5. Control unit with terminals for power and connection of external devices

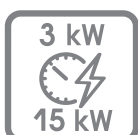
Efficiency
99%



STANDART



*The standard series is elegance
and reliability*



Advantages:

- ▶ Economic power consumption thanks to stepless regulation
Heating circuit from 0 to +90 °C.
- ▶ Reliable hydraulic safety group:
Automatic air vent
Safety valve
- ▶ Selection of individual equipment
- ▶ Selection of individual equipment.
- ▶ There is an option to connect a programmer.
- ▶ High quality powder coating.

TECHNICAL CHARACTERISTICS:

Nominal power, kW	3	4,5	6	7,5	9	10,5	12	15
Supply voltage, V	220	220/380			380			
Electricity frequency in the network, Hz	50	50	50	50	50	50	50	50
Heating element - block, Number of electric tubular heaters	3	3	3	3	3	3	3	3
The maximum pressure in the system, Bar	3	3	3	3	3	3	3	3
Heating control range, °C	Analog: from 0 °C to 90 °C							
Connecting pipes, inches	Ø 3/4"							
Heat storage capacity, dm ³	1,7							
Overall dimensions, mm, HxW x D	650x260x190							
Net weight, no more, kg	15							
Order number	90054	90055 90056	90058 90057	90060 90059	90061	90062	90063	90064

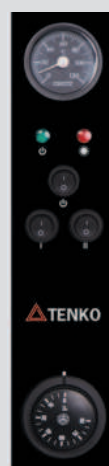


Construction and complete set

1. Automatic ventilation
2. Emergency thermal relay I
3. Heat exchanger made of high-quality steel 3 mm
4. Block of heating elements
5. Circulation pump
6. Safety valve 3 Bar
7. Inlet pipe 3/4"
8. Outlet pipe 3/4"
9. Pressure switch

Control and Management

1. Thermometer
2. Heat level buttons
3. Light indicators
4. Thermostat

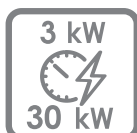


Efficiency
99%



ECONOMY

The Economy series is a popular solution for thrifty owners



Advantages:

- ▶ Simple, reliable construction.
- ▶ COMFORT with control of the heating circuit.
- ▶ Possibility of connecting a circulation pump, room thermostat, programmer, necessary relays and sensors.
- ▶ High quality powder coating body.
- ▶ Heating elements made in-house
- ▶ Attractive price.



Control and Management

1. Control board from 3 to 7,5 kW
2. Device connection terminal

TECHNICAL CHARACTERISTICS:

Nominal power, kW	3	4,5	6	7,5	9	10,5	12	15	18	21	24	30
Supply voltage, V	220	220/380			380							
Electricity frequency in the network, Hz	50											
Heating element - block, Number of electric tubular heaters	3								6			
The maximum pressure in the system, Bar	3	3	3	3	3	3	3	3	3	3	3	3
Heating control range, °C	Analog: from 0 °C to 90 °C											
Connecting pipes, inches	Ø 3/4"								Ø 1"			
Heat storage capacity, dm ³	1,7	1,7	1,7	1,7	1,7	1,7	1,7	1,7	6	6	6	6
Overall dimensions, mm, HxW x D	581x189x97								623x262x97			
Net weight, no more, kg	9											
Order number	50208	49013 50240	49014 49015	49016 49017	49018	49023	49011	49012	45959	95960	95944	95940



Construction and complete set

1. Inlet pipe
2. Emergency thermal relay
3. Heat exchanger made of high-quality steel 3 mm
4. Block of heating elements
5. Safety valve 3 Bar
6. Outlet pipe

Control and Management

1. Thermometer
2. Heat level buttons
3. Light indicators
4. Thermostat



Model: 18, 21, 24, 30 kW

Increased performance by installing additional heating elements

Efficiency
99%



ECO

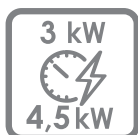


Anticorrosion
treatment

www.tenko.ua



Mini – compact, economical boilers



Advantages:

- ▶ Can be used as a supplement to the existing heating system.
- ▶ The continuous regulation of the temperature of the heat transfer medium ensures COMFORT during use.
- ▶ Reliable, simple design.
- ▶ PROTECTION against overheating.
- ▶ Easy to install and connect to a single-phase power network with a voltage of 220 V.
- ▶ Ergonomics and aesthetics:
Lightweight and compact: can be placed in any room
Powder coating of the housing
- ▶ Quality components: heating elements from our own production, thermostat made in the EU.
- ▶ Attractive price.

TECHNICAL CHARACTERISTICS:

Nominal power, kW	3	4,5
Supply voltage, V	220	220
Electricity frequency in the network, Hz	50	50
Heating element - block, Number of electric tubular heaters	2	2
The maximum pressure in the system, Bar	3	3
Heating control range, °C	Analog: from 0 °C to 90 °C	
Connecting pipes, inches	Ø 3/4"	
Heat storage capacity, dm ³	0,8	0,8
Overall dimensions, mm, HxW x D	500x175x110	
Net weight, no more, kg	5	5
Order number	49019	49020



Construction and complete set

1. Inlet pipe 3/4"
2. Heat exchanger made of high-quality steel 3 mm
3. Block of heating elements
4. Outlet pipe 3/4"

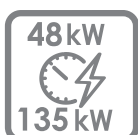
Control and Management

1. Light indicators
2. Heat level buttons
3. Thermostat



FLOOR STANDING

*Floor - reliable floor boilers for installation
from the cottage to the production workshop*



Advantages:

- ▶ Simple, reliable construction.
- ▶ Multi-stage heating.
- ▶ Continuous adjustment of the heat transfer temperature.
- ▶ Quality heating elements made in-house.
- ▶ Built-in general input engine.
- ▶ PROTECTION against overheating.
- ▶ High quality powder coating body.

TECHNICAL CHARACTERISTICS:

Nominal power, kW	30	48	60	72	90	120	135
Supply voltage, V	380						
Electricity frequency in the network, Hz	50	50	50	50	50	50	50
Heating element - block, Number of electric tubular heaters	6	12	12	18	18	27	27
The maximum pressure in the system, Bar	2,4	2,4	2,4	2,4	2,4	2,4	2,4
Heating control range, °C	Analog: from 0 °C to 90 °C						
Connecting pipes, inches	Ø 2"			Ø 2 1/2"			
Heating area m ² / max, Coolant volume, l	150:300 m ² / 150 L		300:600 m ² / 300 L		600:900 m ² / 450 L		900:1300 m ² / 600 L
Overall dimensions, mm, HxW x D	740x329x402			740x358x486		740x417x786	
Net weight, no more, kg	35	35	35	35	50	50	61
Order number	65655	65780	65741	65815	65826	65790	65827



Construction and complete set

1. Automatic Power switching for each step
2. General input engine
3. Modular contactors
4. Heat exchanger made of high-quality steel 5 mm
5. Block of heating elements
6. Inlet pipe 2" or 2 1/2"
7. Outlet pipe 2" or 2 1/2"

Control and Management

1. Light indicator
2. Heat level buttons
3. Thermomanometer
4. Thermostat

Efficiency
99%





PROM

*Prom - reliable solution for
space heating*



Advantages:

- ▶ Economical use of energy through continuous regulation of the heating circuit from 0 to +90 C and the possibility of control via the room thermostat.
- ▶ Four high-quality blocks of home-made thermoelectric heaters on 4 screwed flanges
- ▶ General input machine.
- ▶ Reliable hydraulic safety group: automatic bleeder, safety valve, pressure sensor.
- ▶ Operation in a closed heating system.
- ▶ There is the possibility of connecting room thermostat, programmer and flow sensor.
- ▶ High-quality powder coating and heat exchanger.

TECHNICAL CHARACTERISTICS:

Nominal power, kW	30	36	42	48	60
Supply voltage, V	400				
Rated current consumption per phase pro Phase, A	44	53	62	71	88
Electricity frequency in the network, Hz	50				
Damage protection class for electrical current	1				
Overall dimensions of boiler, mm, HxWxD,	765x412x270				
Overall dimensions of packaging, mm, HxWxD	765x412x270				
Net weight, no more, kg	40	40	41	41	41
Gross weight, not more than, kg	42	42	43	43	43
Connecting pipes, inches	1				
Heating type	Electric tube heater				
Number of heating elements, pieces	12 (4 Blocks of 3 electric tube heater)				
Heating control range, °C	0-90				
Maximum pressure in the system, Bar	2,5				
Order number	97249	97250	97251	97252	97253



Construction and complete set

1. Automatic switching for each power step
2. General input engine
3. Modular contactors
4. Heat exchanger made of high-quality steel 5 mm
5. Circulation pump

Control and Management

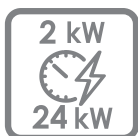
1. Light indicators
2. Buttons on/off and heating levels
3. Thermomanometer
4. Thermostat

Efficiency
99%



HOT AIR GUNS

*Hot air guns - universal heating devices
for heating rooms!*



3 years
warranty



Advantages:

- ▶ Compact size and light weight
- ▶ Ease of use
- ▶ Reliable PROTECTION against overheating
- ▶ Heating elements made in-house
- ▶ High quality powder coating body

TECHNICAL CHARACTERISTICS:

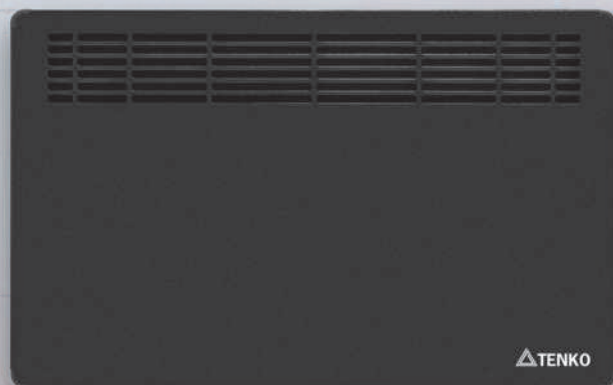
TECHNICAL CHARACTERISTICS Hot air guns TENKO® series TGE

Model	TGE 2_230	TGE 3_230	TGE 4_230	TGE 6_400	TGE 9_400	TGE 12_400	TGE 15_400	TGE 18_400	TGE 21_400	TGE 24_400
Degree PROTECTION	IP 20									
PROTECTION class	II									
Supply voltage, V	230	230	230	400	400	400	400	400	400	400
Current frequency Hz	50									
Nominal performance, kW	2	3	4	6	9	12	15	18	21	24
Rated current consumption per phase, A	9	13	16	9	13	17,5	21,7	26	30,3	34,6
Power mode, kW	0,025/1/2	0,025/1,5 /3	0,027/2 /4	0,058/3 /6	0,089/4,5 /9	0,089/6 /12	0,093/7,5 /15	0,093/9 /18	0,143/10,5 /21	0,143/12 /24
Fan performance, cubic meters/hour	472	472	517	620	1757	1757	1792	1792	2512	2512
Overall dimensions, mm, HxWxD	260*240 *360	260*240 *360	260*240 *360	370*285 *440	395*335 *485	440*335 *485	485*335 *485	530*335 *485	575*335 *485	620*335 *485
Net weight, kg	4,5	4,8	4,8	9,5	12	14	16	18	22	24
Order number	97226	97180	97181	97231	97232	97233	97234	97235	97236	97237

TECHNICAL CHARACTERISTICS Hot air guns TENKO® Series TGS

Model	TGS 2_230	TGS 3_230	TGS 4_230	TGS 6_400	TGS 9_400	TGS 12_400	TGS 15_400	TGS 18_400	TGS 21_400	TGS 24_400
Degree PROTECTION	IP 20									
PROTECTION class	II									
Supply voltage, V	230	230	230	400	400	400	400	400	400	400
Current frequency Hz	50									
Nominal performance, kW	2	3	4	6	9	12	15	18	21	24
Rated current consumption per phase, A	9	13	16	9	13	17,5	21,7	26	30,3	34,6
Power mode, kW	0,025/1/2	0,025/1,5 /3	0,027/2 /4	0,058/3 /6	0,089/4,5 /9	0,089/6 /12	0,093/7,5 /15	0,093/9 /18	0,143/10,5 /21	0,143/12 /24
Fan performance, cubic meters/hour	472	472	517	620	1757	1757	1792	1792	2512	2512
Overall dimensions, mm, HxWxD	260*240 *360	260*240 *360	260*240 *360	370*285 *440	395*335 *485	440*335 *485	485*335 *485	530*335 *485	575*335 *485	620*335 *485
Net weight, kg	4,5	4,8	4,8	9,5	12	14	16	18	22	24
Order number	97238	97239	97240	97199	97200	97201	97241	97242	97243	97244

ELECTRICAL CONVECTORS



*Electric CONVECTORS - practical,
fast, modern!*



Advantages:

- ▶ The air gap is heated quickly and evenly through convection.
- ▶ Safe to use: integrated overheating protection.
- ▶ Economical energy consumption – automatically maintains the temperature.
- ▶ One or two heat settings.
- ▶ Easy management.
- ▶ Light indicator for operation.
- ▶ Practical cardboard packaging with a handle for transport.
- ▶ Possibility of stationary or mobile installation: Equipped with a Euro cable and mounting brackets.
- ▶ Legs for mobile installation (optional).
- ▶ Two colors: white or graphite

TECHNICAL CHARACTERISTICS:

Order number	Model	Power, W	Rated current consumption, A	Overall dimensions, mm, HxWxD	Heating area, m ²	Weight, kg	Type of heating element	Color
96383	ENK(C)1000	1000	4.4	726x466x75	10	5.5	open	White
96384	ENK(C)1500	1500	6.5	726x466x75	15	5.5	open	White
96385	ENK(X)500	500	2.2	476x466x75	5	3.8	closed	White / Graphite
96386	ENK(X)1000	1000	4.4	726x466x75	10	3.8	closed	White / Graphite
96387	ENK(X)1500	1500	6.5	726x466x75	15	5.8	closed	White / Graphite
96389	ENK(X)2000	2000	8.7	826x466x75	20	7.2	closed	White / Graphite
96390	ENK(X)2500	2500	10.9	1006x466x75	25	7.6	closed	White / Graphite
96718	ENK(XD)1000	1000	4.4	726x466x75	10	5.8	closed	White / Graphite
96720	ENK(XD)1500	1500	6.5	826x466x75	15	7.2	closed	White / Graphite
96722	ENK(XD)2000	2000	8.7	1006x466x75	20	7.6	closed	White / Graphite



Electronic control unit*: convenient setting and control of device operation. Energy savings.

*

All models with markings ENK (xd)



Closed heating element * with aluminum diffuser to increase the surface area and material CHARACTERISTICS.

Has increased heat power, the air does not dry out.

*

All models with markings ENK (X), ENK (XD)



READY SOLUTIONS

Heating elements for towel dryers



Application: Installation in towel dryers of any type, design and construction.

With the help of a threaded connection, installation is possible on both the left and right.

Built-in electronic thermostat with high precision adjustment (0.1°C) prevents overheating and excessive power consumption.

Temperature regulation from +10 °C to +65 °C.

Frost protection function +10 °C.

Heating indicator.

Power, W	300	600	900	1200	300	600	900	1200
Immersion length, mm	300			440	300			440
Connection size	1/2"							
Rated voltage, V	220							
Strength of protection	IP 54							
Material heating elements	Copper							
Coating of heating elements	Nickel							
Color of body	White				Grey			
Order number	51631PS	51632PS	51658PS	51633PS	51631PS	51632PSH	51658PSH	51633PSH

RS heating elements for boilers



Application: for boilers from 1000 to 3000 W.

Easy installation and connection (nut/head with 6 sites, cable with plug).

Can be used in/with various environments and heat media.

Possibility of installation in existing heating devices.

Smooth temperature regulation thanks to the practical outdoor thermostat from +30 °C to +75 °C

Automatic maintenance of the set temperature.

Longer service life thanks to the "cold" zone in the lower body area.

Two-stage PROTECTION against overheating: built-in thermostat, mechanical reset button.

Order number	Power, W	Connection, inches	Length, mm	Immersion depth, mm	Weight, g not more than	Cable cross section, mm ²	Form	Material Of heating elements
96304	1000	1 1/4"	380	300	560	0,75	straight	Stainless steel
96305	1500	1 1/4"	430	350	605	0,75	straight	Stainless steel
96306	2000	1 1/4"	500	420	635	1	straight	Stainless steel
96307	2500	1 1/4"	445	355	730	1,5	bent	Stainless steel
96308	3000	1 1/4"	460	370	757	1,5	bent	Stainless steel
96309	1000	1 1/4"	380	300	570	0,75	straight	Copper
96310	1500	1 1/4"	440	360	630	1	straight	Copper
96311	2000	1 1/4"	480	400	655	1	straight	Copper
96312	2500	1 1/4"	430	350	750	1,5	bent	Copper
96313	3000	1 1/4"	430	350	770	1,5	bent	Copper

READY SOLUTIONS

Heating elements RS-S



Application: for heaters from 500 to 2500 W.

Easy installation and connection (nut/head with 6 side, one cable with one plug).

Can be used in/with various environments and heat media.

Possibility of installation in existing heating devices.

Smooth temperature regulation thanks to the practical outdoor thermostat from +30 °C to +75 °C.

Automatic maintenance of the set temperature.

Longer service life thanks to the “cold” zone in the lower area of the body.

Two-stage PROTECTION against overheating: built-in thermostat, mechanical reset button.

High-quality materials, unique design, manufacturer's guarantee.

Order number	Power, W	Connection, inches	Length, mm	Immersion depth, mm	Weight, g not more than	Cable cross section, mm ²	Form	Material Of heating elements
96288	500	1 1/4"	365	285	538	0,75	straight	Stainless steel
96290	800		365	285	610	0,75	straight	Stainless steel
96292	1000	1 1/4"	385	305	568	0,75	straight	Stainless steel
96294	1200		395	315	625	1	straight	Stainless steel
96296	1500	1 1/4"	410	330	640	1	straight	Stainless steel
96298	2000		450	370	650	1	straight	Stainless steel
96300	2500	1 1/4"	500	420	665	1,5	straight	Stainless steel
96302	3000		580	500	680	1,5	straight	Stainless steel
96289	500	1 1/4"	365	285	538	0,75	straight to the left	Stainless steel
96291	800		365	285	610	0,75	straight to the left	Stainless steel
96293	1000	1 1/4"	385	305	568	0,75	straight to the left	Stainless steel
96295	1200		395	315	625	1	straight to the left	Stainless steel
96297	1500	1 1/4"	410	330	640	1	straight to the left	Stainless steel
96299	2000		450	370	650	1	straight to the left	Stainless steel
96301	2500	1 1/4"	500	420	665	1,5	straight to the left	Stainless steel
96303	3000		580	500	680	1,5	straight to the left	Stainless steel
96333	500	1"	370	280	545	0,75	straight to the left	Stainless steel
96335	700	1"	370	280	545	0,75	straight	Stainless steel
96337	1000	1"	390	300	555	0,75	straight	Stainless steel
96339	1200	1"	390	300	555	1	straight	Stainless steel
96341	1500	1"	405	315	555	1	straight	Stainless steel
96343	2000	1"	430	340	565	1	straight	Stainless steel
96334	500	1"	370	280	545	0,75	straight to the left	Stainless steel
96336	700	1"	370	280	545	0,75	straight to the left	Stainless steel
96338	1000	1"	390	300	555	0,75	straight to the left	Stainless steel
96340	1200	1"	390	300	555	1	straight to the left	Stainless steel
96342	1500	1"	405	315	555	1	straight to the left	Stainless steel
96344	2000	1"	430	340	565	1	straight to the left	Stainless steel

READY SOLUTIONS FOR WATER HEATING

Electric water heater (Series VE)



Application: for installation in instantaneous heating systems for industry and households.

The type of heating is a block of 3 heating elements made of stainless steel. Housing with powder coating and anti-corrosion treatment for long-lasting power.

Diameter of connecting pipes: 1 1/4" inches.

The set includes reliable clamps for wall mounting.

Nominal performance, kW	3	4,5	6	7,5	9	10,5	12	15
Supply voltage , V	220/380						380	
Connecting pipes, inches	1 1/4"							
Order number	51950	51943	51947	52022	52023	52051	52052	52053

TECHNICAL CHARACTERISTICS VE + with Thermostat

Nominal power consumption, kW	3	4,5	6	7,5	9	10,5	12
Line voltage, V	230/400					400	
Rated current consumption per phase, A	13/5	20/7	26/9	33/11	13	16	18
Current frequency, Hz	50						
Protection class against electric shock	I						
Degree of protection of the case	IP 56						
Overall dimensions of boiler, mm, HxWxD	730 x 150 x 140						
Overall dimensions of packaging, mm, HxWxD	150x150x800						
Net weight, no more, kg	4,2	4,3	4,5	4,7	5	5	6
Gross weight, not more, kg	5,7	5,8	6	6,2	6,5	6,5	7,5
Connecting pipes, inches	1 1/4						
Heating type	Electric tube heater						
Number of heating elements, pieces	3						
Heating control range, °C	0-77						
Maximum pressure in the system, Bar	3						
Order number	97303	97304	97309	97310	97312	97306	97307

VE + with Thermostat



Adjustable heating block (BNR)



Application: Electric water heater with thermostat, suitable for use in the instantaneous system. Heating with existing safety group and circulation pump, as a complement to a solid fuel or gas boiler. It is a heat exchanger with a TEN block screwed onto the flange with a thermostat in a protected metal case. Power from 3 to 12 kW.

Connection to the heating system 1 1/4 inch. Maximum pressure in the system 3 bar. Advantages are the easy installation and connection to the power grid. Brackets and anchors for fastening are included.

Application: Heating liquids in tanks and containers, as well as in heating systems with a volume of not more than 30 liters.

It consists of a block of heating elements, capillary thermostat with double overheating protection COTHERM (France), protective cover with sealing rings.

The material of the of heating elements is stainless, heat-resistant steel.

The material of the flange of the of heating elements is brass (LC59).

The housing material is stainless steel

Easy to install, use and maintain.

Nominal power, kW	3	4,5	6	7,5	9	10,5	12
Supply voltage , V	220/380					380	
Temperature control, C	Analog: from 0 °C to 90 °C						
Protection class	IP 54						
Overall dimensions, mm, HxWxD	115x115x300 ~ 420				115x115x420 ~ 4850		
Order number	52061	52063	51947	52067	51916	52057	51877

TENKO - made with heart!

The TENKO group of companies has specialized in the production of ELECTRIC BOILERS, heating elements and accessories since 2008.

We study the experiences of global industry leaders and constantly improve our technologies and equipment. We believe that electric heaters are the cleanest and most environmentally friendly and our mission is to make them available to as many people as possible. The experience and enthusiasm of our team are reflected in modern products, the main features of which are energy efficiency and reliability.

The boiler body and the heat exchanger are subjected to anti-corrosion treatment. Heat exchangers used in the design of Tenko boilers are subjected to mandatory hydraulic tests under a pressure of 7 bar. We also test the hydraulic group, the electronics and the electrical components. The company's new development direction is the production of wireless sensors and Wi-Fi modules, which enable even lower power consumption.

This is our contribution to preserving the environment. In response to market demand in 2020, we started producing electric CONVECTORS and are expanding the range of heating devices. We value partnership, openness to change, responsibility in work and relationships and offer favorable conditions for collaboration.

All Tenko products are certified and provided with a guarantee.



Address of production:

Pisochyn, Poltavske Shosse, 212 - V
Tel.: +380 44 222 98 17, +380 99 173 70 40



Production address in Ukraine:

Pisochyn, Poltavske Shosse, 212 - V
Tel.: +380 44 222 98 17, + 380 99 173 70 40
Fax + 380 96 187 94 82
Free support hotline: 0800 755 665
www.tenko.ua

Bürokontakte in Deutschland:

TENKO UG (haftungsbeschränkt)
Königsteiner Str.6A
65812 Bad Soden am Taunus , DE
Kontakte in der EU
+491795923796
infotenkoug@gmail.com